

SLCP: A Tool to End Audit Fatigue

Janet Mensink – SLCP Executive Director
janet@slconvergence.org

ITMF Annual Conference
21 October 2020



What is the Social & Labor Convergence Program (SLCP)?

SLCP is a multi-stakeholder initiative to reduce audit fatigue and improve working conditions.

VISION:

*Converged Assessment.
Collaborative Action.
Improved Working
Conditions.*

MISSION:

To implement a **converged assessment framework** that supports stakeholders' efforts to improve working conditions in global supply chains.

SLCP Signatories – 223

October 2020

Brands/Retailers (50): adidas Group, Aldo Group, Amer Sports (Arc'teryx, Peak Performance), Ann Inc, Arena Italia SpA, Asics Corporation, BESTSELLER, Brooks Sports, C&A, Camelbak, Charles Komar & Sons, Columbia Sportswear (PrAna Living), De Bijenkorf, Deckers Brands, Eileen Fisher, Esprit, Fanatics, Fastretailing/Uniqlo, G-Star RAW, Gap Inc, Hennes & Mauritz (H&M), INDIGENOUS, Inditex, KappAhl, Kathmandu, Kering, Levi Strauss & Co, LL Bean Inc, Lojas Renner, Loomstate, lululemon Athletica, Macy's, Mountain Equipment Co-op (MEC), Mud Jeans, New Balance, Nike, Outerknown, Patagonia, Pentland Brands, Puma, PVH Corporation, REI, Sanmar Corporation, SewEasy, Target Corporation, The Children's Place, VF Corporation, Williams-Sonoma Inc, Zalando, Zephyr Graf-X

Manufacturers (39): 1888 Mills, Artistic Milliners, Arvind Mills, Avery Dennison Corp, Ceres Dis Ticaret Textile Agency Ltd, Ciel Textile, Chenfeng Group Co., Classic Fashion, Comfit Composite Ltd, Crescent Bahuman Ltd, Crystal Group, DBL Group, Décor Co Ltd, Denim Expert, Delta Galil, Esquel Group, Hanbo Enterprises Holdings Ltd, Hansae, Hirdaramani Ent., Hop Lun, ISKO, L&E Int. Ltd., MAS Holdings, Milteks Group, Pratibha Syntex Ltd, Ramatex Group, Shahi Exports, SaiTex, SLN Tekstil, Soorty Enterprises, TAL Apparel Group, Thread International, W. L. Gore & Associates, VISigma Apparel Group, World Knits Ltd, Yesim, Yousstex, Youngone, Yunus Textile Mills

Agents (5): Ethical Apparel Africa, Haddad Group, Li&Fung (Trading) Ltd., MGF Sourcing, Randa Accessories

Audit Firms & Service Providers (72): ABS Quality Evaluations Inc, Accordia Global Compliance Group, ACT Testing Certification Technology Service Co Ltd, AJA Bangladesh Ltd, ALGI, API, AS International, Assent Compliance, Asya CC&C, BCI Compliance Group Ltd, Benchmarks Company Ltd, Best Compliance Ltd, Big Cove Consulting, APCert Technical Services Co Ltd, BSI Group, Bureau Veritas, Bronco Technology, Business Link Consulting Co Ltd, Centre Testing International Group Co. Ltd, Control Union Certifications, CSER Solutions Limited, DNVGL, EasyDone Social Compliance Consulting Institute, ELEVATE Hong Kong Holdings Ltd, ESG360 Ltd, Eurocert SA, Extensive Standard Technical Services Co Ltd (ESTS), Eurofins AQM HK, Fairland Ltd, Footprints, GCL International Ltd, Globalgroup Certification Ltd, GSCS International Ltd, Guardian Independent Certification Ltd, Hong Kong Quality Assurance Agency (HKQAA), HXC (Beijing) Certification Center Co Ltd, Impactt Ltd, International Associates Limited, International Compliance Group, Intertek, Key of Sustainable Improvements Ltd, Leadership & Sustainability, Leverage Ltd, Madeown International Testing Certification Inc, NEWAsia Solutions Ltd, Novi Group, Omega Compliance, OneStep Viet Co Ltd, Onsite Compliance & Technical Service Co Ltd, Openview Service Ltd, Ozone Sustainability Management Systems (OSMS), Partner Africa, QIMA Ltd, Rina Services SpA, SCSA Group, SGS, SMT Global, Standard Testing and Verification Jiangsu Company Ltd, Stantec SpA, Sumerra, Sundar, Sustainable Management System Inc (SMS), Taos Network, Teks Tech Inspection India Private Ltd, TOTALIKA Vertical Solutions, TÜV Rheinland, TÜV SÜD, UL Responsible Sourcing, URS Verification Private Ltd, VJN Global Solutions Ltd, V-Trust Inspection Service, We-Tek Ltd

Consultancies & Service Providers (16): &Wider, ARCHE Advisors, CSR Solutions Limited, FutureMade, Huaping Education, iMentor Development Services Private Ltd, Innovatus, Matrix Sourcing / Triple Tree Solution, Micro Benefits, Quizrr, REDEFINE, Sustainable Alliance, The Sentio Advisory Group, Timeline Consultancy, Ulula, Workplace Options

Industry Association (11): Abvtex, AIM-Progress, American Apparel & Footwear Association (AAFA), EURATEX, European Outdoor Group (EOG), Istanbul Apparel Exporters' Association (İHKİB), International Apparel Federation (IAF), International Textile Manufacturers Federation (ITMF), Joint Apparel Association Forum (JAAF), Outdoor Industry Association (OIA), Turkish Textile Employers Association (TTEA)

Multi-Stakeholder Initiatives, Standard Holders & Civil Society (28): Better Buying Institute, Cradle to Cradle Products Innovation Institute, Dutch Agreement on Sustainable Garments & Textile, EcoVadis, Enviu, Ethical Trading Initiative Norway (IEH), Fair Factories Clearinghouse, Fair Trade USA, Fair Working Conditions, Fairtrade Foundation, Freedom Fund, Global Fashion Agenda, Higg Co, IDH, Inspectorio Inc, MVO Nederland, New Earth, Norges Bank Investment Management (NBIM), OEKO-TEX Service GmbH, Proudly Made in Africa, Responsible Sourcing Network, Sustainable Apparel Coalition (SAC), Sedex, SIM Supply Chain Information Management, Solidaridad, Textile Exchange, The Mekong Club, Verité

National Governments (2): Denmark - Ministry of Foreign Affairs, Netherlands Government

Intergovernmental organizations – observer status (1): Better Than Cash Alliance

25 years of Social Audits

- Proliferation of social compliance tools
- All more or less the same: duplication of resources
- But outcomes not comparable (apples to pears)
- Waste of money and efforts (estimated > 150 M USD/year)
- Effective in improving working conditions ?

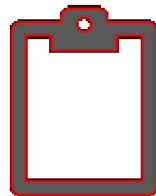
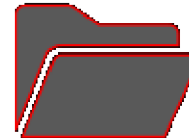
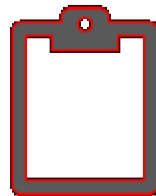
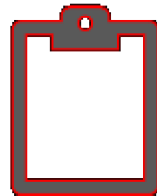
Audits

Protocols

Standards

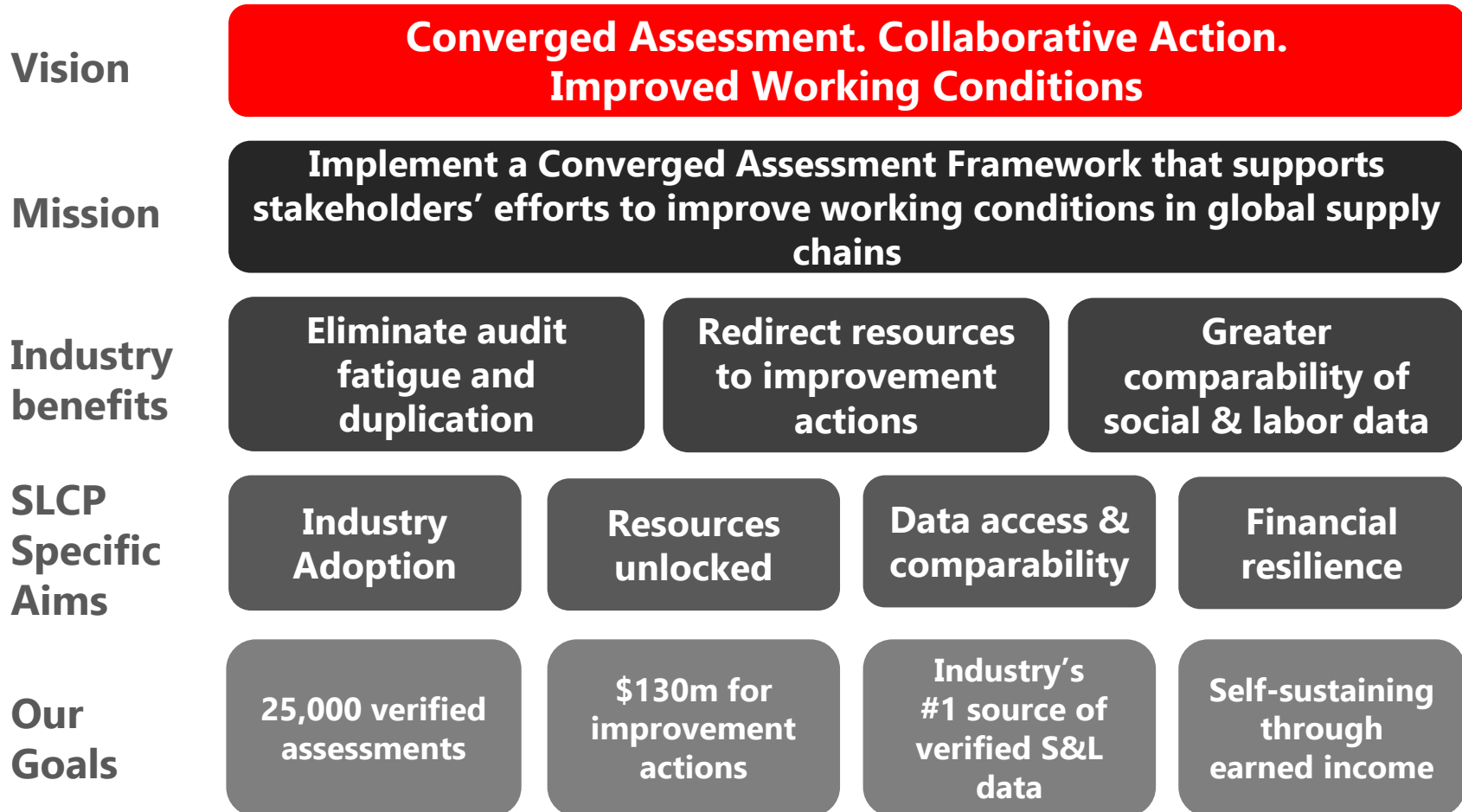
Codes

Approaches



What are the aims of SLCP?

Strategic Plan 2019-2023



How does SLCP work?

Comprehensive and robust tool and verification methodology developed by signatories:

Converged Assessment Framework (CAF)

- Data Collection Tool
- Verification Protocol
- Verifier Guidance

Implemented in a three-step assessment process:

SLCP assessment & verification process

1. Data collection
2. Verification
3. Data hosting & sharing

The outcome of an SLCP verified assessment has no scoring

Standard agnostic verified data set

- No scoring
- No pass/ fail
- Not a certification

Visit the [SLCP Gateway](#) for more information

How does SLCP maximize data sharing?

Unique data hosting & sharing system allows facility to share verified data through multiple platforms. Brands & other stakeholders can choose the platform that best meets their needs.

SLCP Gateway



- Central repository for SLCP verified data
- Built by ITC
- Facilities control data sharing from their Gateway account

Active Accredited Hosts

Current Active Accredited Hosts:



- Provide the SLCP Converged Assessment Framework on their platform for facilities and Verifiers to complete the SLCP assessment process.
- Push verified data to the Gateway
- Receive verified data from the Gateway
- Provide verified data to their members/ customers with value-added services (e.g. scoring/ analytics)

Passive Accredited Hosts

Current Passive Accredited Hosts:



- Receive verified data from the Gateway
- Present verified data to their members/ customers with value-added services (e.g. scoring/ analytics)

Brands & Standard Holders that accept SLCP Data

For more details, including which countries and tiers brands & standard holders accept SLCP data from, please see the full list on our [website](#).





Where is SLCP available?

SLCP is currently available in:

- **Africa:** Kenya, Madagascar, Mauritius, Morocco & Tunisia
- **Americas:** Argentina, Colombia, Dominican Republic, El Salvador, Guatemala, Honduras, Mexico, Peru & the USA
- **Asia:** Bangladesh*, China, Hong Kong, India, Indonesia*, Macau, Malaysia, Myanmar, Philippines, South Korea, Sri Lanka, Taiwan, Thailand & Vietnam*
- **Europe:** Bulgaria, North Macedonia, Poland, Portugal, Romania, Spain & Turkey

Manufacturer Case Study 2019:

Saving of 20 unnecessary audits



The manufacturer says:
"We believe by encouraging our customers to accept SLCP data, both brands and factories can reduce the redundancy of audits and focus on the improvement plans, training, & other beyond compliance programs"



What are the benefits of SLCP?

- **Efficiency:** reduction in time and money spent on audits; reduction in audit fatigue
- **Comprehensive tool:** SLCP covers all the data points / questions collected in nearly all other audits
- **Multi-stakeholder:** SLCP has been developed collaboratively by brands, manufacturers and other stakeholders
- **Credibility:** high quality, reliable verified social & labor data
- **Flexibility:** brands can score the data according to their own code of conduct
- **Facility ownership:** facilities own their data & control how it is shared

Where to Go for More Information

SLCP Gateway



- Converged Assessment Framework – [click here](#)
- FAQs & Helpdesk Support – [click here](#)
- Quality Assurance Manual – [click here](#)
- Account creation (facilities only) – [click here](#)
- Public list of facilities – [click here](#)
- List of available Verifier Bodies – [click here](#)
- Costs related to SLCP - [click here](#)

SLCP Website



- List of SLCP signatories – [click here](#)
- Upcoming SLCP events – [click here](#)
- 2018 Light Operations evaluation – [click here](#)
- 2019 Annual Report – [click here](#)
- Info about SLCP Accredited Hosts – [click here](#)

Please get in touch to join!
Become a signatory and confirm your public support to this program by sending an email to info@slconvergence.org.